

UNLOCK YOUR ORGANISATION'S FULL POTENTIAL WITH DTP, HP & WINDOWS 11 PRO

SECURITY

FORTIFY AGAINST
EVOLVING THREATS



HP Security +
Windows 11 Pro =
Unmatched Protection

- 83% of global organisations faced firmware attacks in the last two years¹
- **Robust Security Features:** Hardware-based isolation, HP Sure Click, HP Tamper Lock, HP Sure Start

WHY DTP?

Leverage HP's Workforce Experience Platform with DTP's expertise to perform comprehensive Windows 11 readiness assessments. Identify ready devices, those that may face performance issues and those that require upgrades, ensuring your transition is smooth and secure.

SUSTAINABILITY

PROGRESS TOWARD
A GREENER FUTURE



HP's Commitment
+ Windows 11 Pro =
Sustainable Innovation

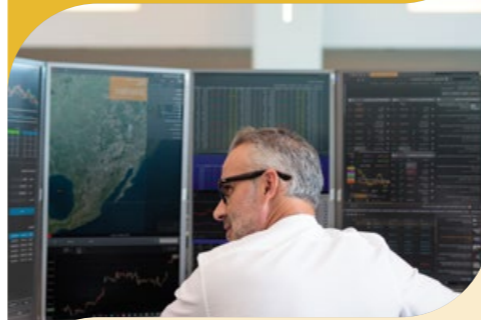
- Designed with the future in mind using recycled materials, energy-efficient components, and responsible packaging
- **HP's Key Sustainability Goals:** 75% Circularity by 2030 | 95% of devices with recycled materials | 87.7% landfill diversion globally

WHY DTP?

Enhance sustainability with DTP's service: decommissioning, recycling, and carbon-neutral computing via DTP Zero. Optimise your IT lifecycle while reducing environmental impact, ensuring your business contributes to a greener future.

AI & INNOVATION

REVOLUTIONISE
YOUR WORKFLOW



HP's AI-Enhanced PCs +
Windows 11 Pro =
Smarter Workflows

- Insights show that 70% of employees want AI to ease workloads. Leverage the largest portfolio of AI PCs, all empowered by Windows 11 Pro
- Boost productivity with Windows Copilot for intelligent multitasking and personalised recommendations

WHY DTP?

With HP's Workforce Experience Platform's asset and software management capabilities, DTP can help you to monitor and optimise device performance, ensuring your team fully harnesses AI to work smarter, not harder.

PRODUCTIVITY & COLLABORATION

EMPOWER HYBRID
WORK



HP's Advanced Tech +
Windows 11 Pro =
Enhanced Collaboration

- 89% of employees say outdated tech impacts productivity. Boost productivity by 50% with HP + Windows 11 Pro

WHY DTP?

DTP provides comprehensive Windows upgrade services, including cost-effective OS upgrades and Microsoft White Glove services for seamless device provisioning. Equip your team with the latest technology to thrive in a hybrid work environment.

SUPPLY CHAIN RESILIENCE

RELIABLE DELIVERY
& SUPPORT



HP's Global Reach +
Ethical Standards =
Dependable Supply Chain

- Consistent Delivery: HP's supply chain ensures you get what you need when you need it
- Ethical Responsibility: High social and environmental standards across the supply chain

WHY DTP?

As the highest level HP Amplify Partner and authorised service provider, DTP ensures reliable delivery, warranty services and a circular economy to maximise the value and lifespan of your tech assets.

WANT TO MAKE YOUR WINDOWS 11 TRANSITION AS SMOOTH AS POSSIBLE?

REACH OUT TO US TODAY ON 0113 276 0210 OR HELLO@DTPGROUP.CO.UK



(1. Security Signals, Microsoft, March 2021)